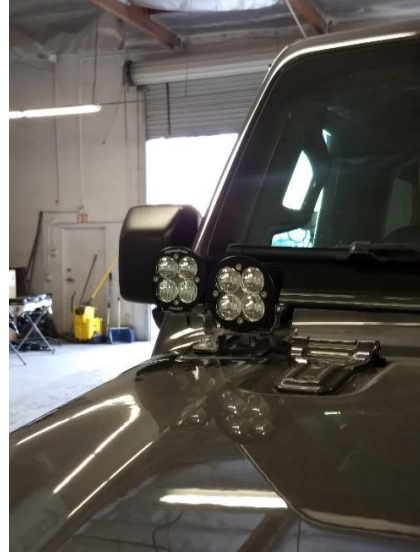




baja designs[®]
The Scientists of Lighting

2018 Jeep JL Cowl Mount Kit Instructions & Dual A-pillar Kit Instructions



185 Bosstick Boulevard • San Marcos • CA • 92069

Phone 760-560-2252 • Fax 760-560-0383

info@bajadesigns.com • www.bajadesigns.com



baja designs[®]
The Scientists of Lighting

LIMITED LIFETIME WARRANTY

Baja Designs proudly offers a LIFETIME WARRANTY against manufacturer's defect on all the products that we manufacture.

These are comprehensive warranties; other than the exclusions below – you're covered. If your LED or HID bulb burns out, you're covered. Additionally, cutting off our connector or changing your lenses does not automatically void your warranty.

Exclusions:

Installation errors, abuse, misuse or crash damage. You must be the original owner of the product and can supply proof of purchase.

Baja Designs manufactures its own products as well as resells products manufactured by others. Baja Designs makes no express or implied warranties on products not manufactured by Baja Designs including without limitation any warranties or merchantability and fitness for a purpose. We will however, pass on all warranties made by the manufacturer, who has sole responsibility for performing such warranties.

Baja Designs will pay the freight if your product is less than 90 days old, otherwise defective products must be returned to Baja Designs, Inc., freight prepaid. At our option, we will repair or replace items in question and return them at no charge. If the identical product is no longer available, we will replace with a similar product of equal value. Baja Designs Inc. will not be responsible for any indirect or consequential damages in connection with defective merchandise. Items purchased through a Baja Designs authorized dealer must be returned through the dealer. Only available on LED auxiliary lights and product must be in sellable condition at MSRP. Product that has been damaged in any way after the original purchase date will be excluded from this guarantee.

Indemnification:

Buyer hereby acknowledges off-roading, racing and driving at night are dangerous activities and that the products and/or supplies purchased from Baja Designs are used in an inherently dangerous activity that may endanger life and limb; and in no event shall the seller, or seller's heirs and assigns, be held liable for consequential damages, nor shall seller's liability on any claim for damages arising out of or connected with the sale, delivery, or use of purchased products and/or supplies exceed the purchase price of the products and/or supplies.

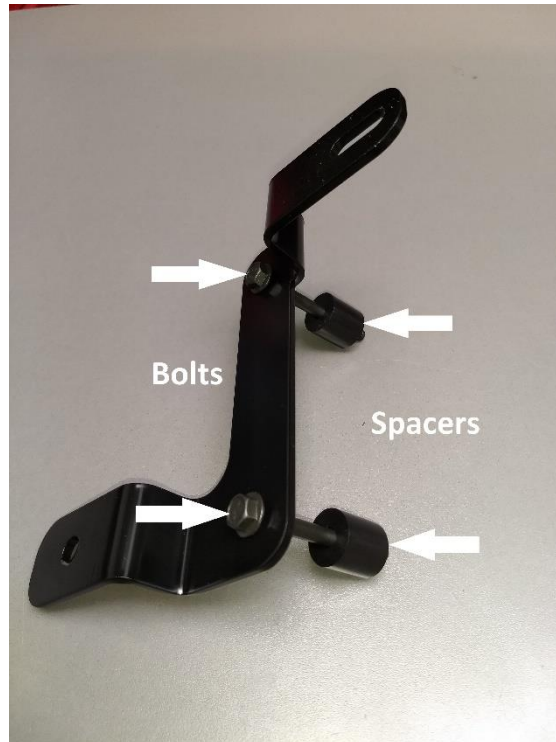


baja designs
The Scientists of Lighting

Step 1: Locate and remove the two bolts at the base of the windshield on the driver and passenger sides.



Step 2: With the hardware included in the kit, place one M6 washer onto each M6 bolt, insert the four bolts and washers into driver and passenger side brackets and then place one spacer onto each bolt.

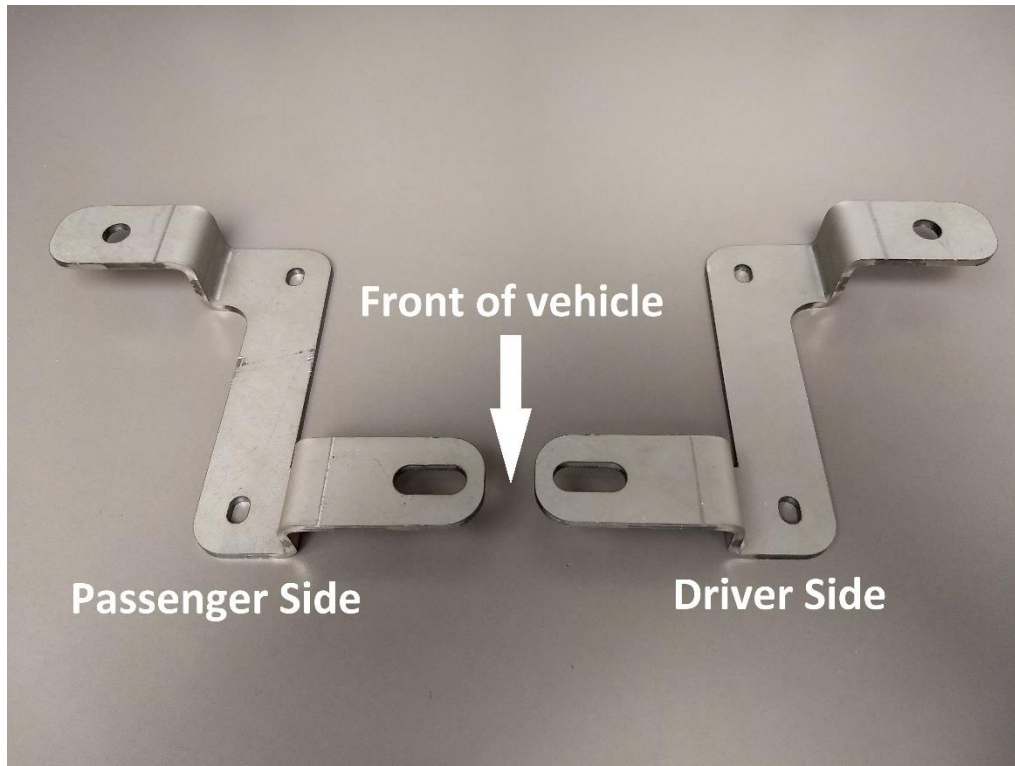


Step 3: Install driver and passenger side brackets onto their corresponding sides and tighten snugly.

****Note: Do not overtighten the bracket bolts.****



baja designs
The Scientists of Lighting



Step 4: Install lights onto brackets and tighten the 3/8" hardware included with the lights.

Step 5: Use the wire harnesses included with the Squadron lights and connect directly to the battery with the positive and negative leads. Route the light switch to the desired location in the cab.

****Note: For the Dual A-pillar Kit the purchase of two short splitters (part number 61-3607) will allow you to operate all four lights via a single switch and one wire harness.****

Step 6: With the 3 pin S8 harness (64-0152) connect the positive and negative leads to the battery and route the switches into the desired location in the cab.

****Note: For the Cowl Mount Kit use the harness included with the Squadron pair and the 3 pin S8 harness. On the S8 harness the toggle switch controls the on-off function of the light and the push button switch controls the amber backlight.****